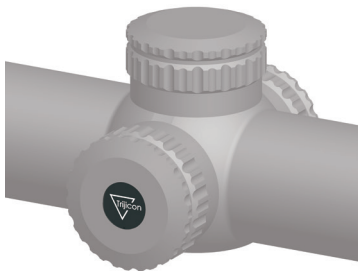


**Trijicon**<sup>®</sup>

Brilliant Aiming Solutions<sup>™</sup>



Instruction Card

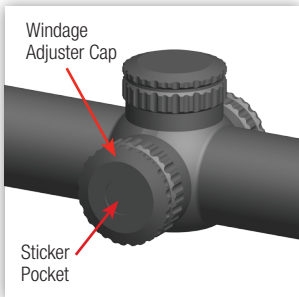
**ACCUPPOINT<sup>®</sup> / ACCUPOWER<sup>®</sup>  
ADJUSTER CAP EMBLEM  
INSTALLATION**

## INSTALLATION

---

**Step 1.** Install the Windage Adjuster cap with recessed sticker pocket to a comfortable tightness over the Windage Adjuster.

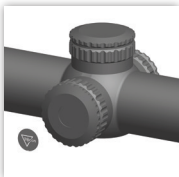
**Note:** Elevation adjuster cap does not have a sticker pocket.



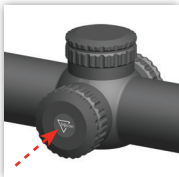
## INSTALLATION

**Step 2.** Peel the Trijicon emblem off its backing paper.

**Step 3.** Lightly install the emblem into the adjuster cap pocket making sure it's horizontal.



**Step 4.** Firmly press the emblem down for 10 seconds completing the installation.



[WWW.TRIJICON.COM](http://WWW.TRIJICON.COM)

© 2016 Trijicon, Inc. | PML6020 Rev(0) 0216